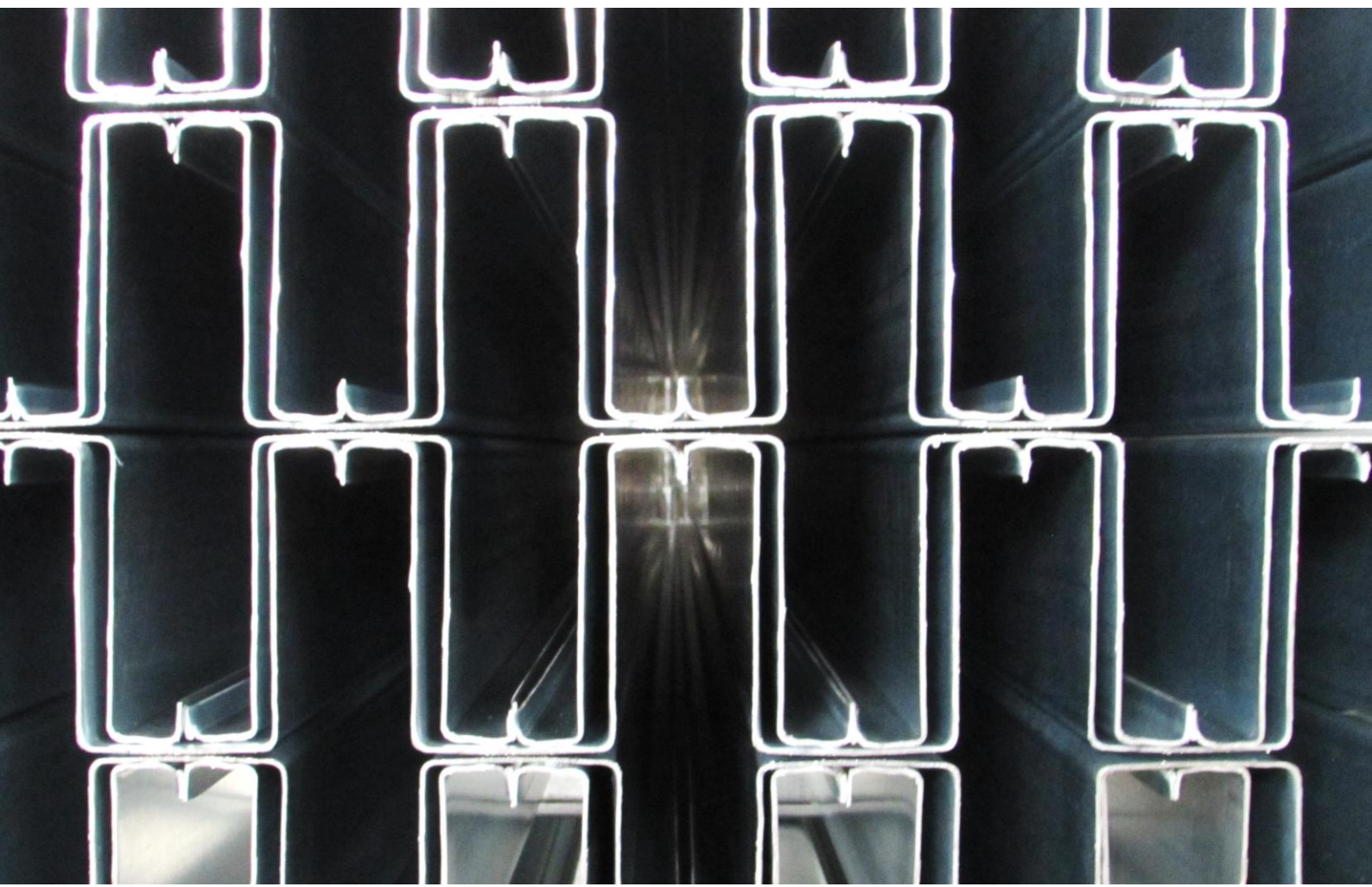




**BARRALFERROS**



<b>BARRAFERROS, LDA.</b>	<b>3</b>
<b>CERTIFICAÇÃO · CERTIFICATION</b>	<b>5</b>
<b>PERFIS · PROFILES</b>	<b>8</b>
B-SIGMA · B2-SIGMA · BZ-SIGMA	6
OMEGA OB	7
OMEGA	8
OMEGA R	9
Z	10
C	11
G40	12
TUBULAR	13
VIGA TRELIÇADA · TRUSS BEAM	14
COBERTURA VÃO APROVEITADO · ATTIC ROOF	15
RBF · RBF & OB35/40 · RBF & UB120	16
CP	17
UB40 & UB60	17
RIPAS · PURLINS	18
PERFIS PARA CONSTRUÇÃO EM AÇO LEVE SECTIONS FOR LIGHT STEEL FRAMING	19
PERFIS PARA PAINÉIS FOTOVOLTAICOS SECTIONS PHOTOVOLTAIC PANELS	20
PERFIS PARA ESTUFAS · SECTIONS FOR GREENHOUSES	21
ESTACA · STAKE	22
CABECEIRA · HEADSTAKE	22
PERFIS PORTÃO DE CORRER · SECTIONS FOR SLIDING GATE	23
<b>QUINAGEM · PRESS-BRAKING</b>	<b>24</b>

# DESIGN, DESENVOLVIMENTO E FABRICO DE PERFIS E ESTRUTURAS DE AÇO ENFORMADO A FRIO

1991  
ano de  
fundação

A Barraferros desenvolve soluções para os setores da construção, reabilitação, energia e agricultura, com o objetivo de afirmar os perfis de aço enformado a frio como solução eficiente e sustentável para a construção do presente e do futuro.

perfis  
de aço

+250

steel  
sections

mm de  
espessura

0,6-4,0

structural steel  
EN 10346

aço estrutural  
EN 10346

S280GD  
S350GD  
+Z e +ZM

mm of  
thickness

aço inoxidável  
EN 10088

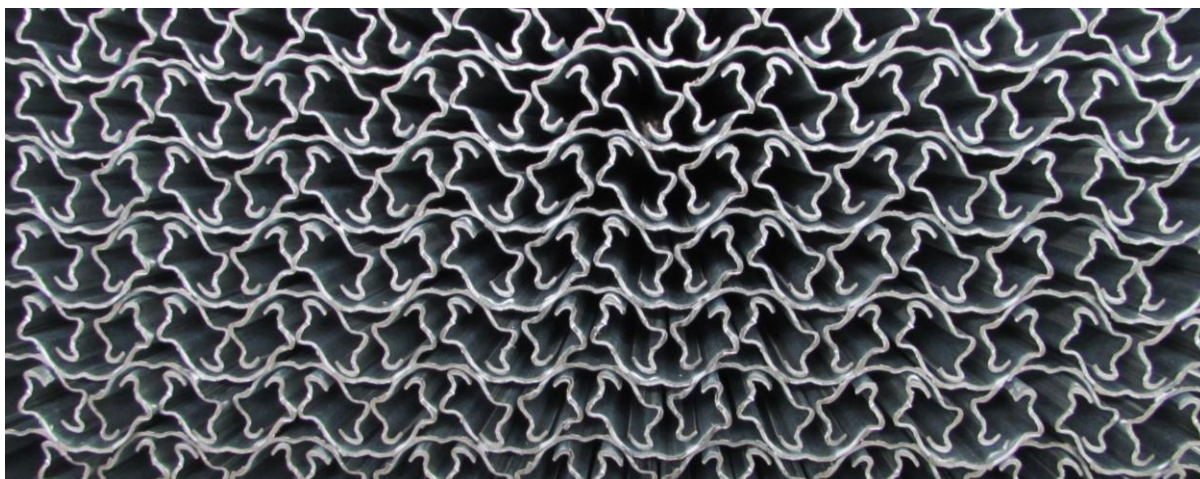
1.4301 (304)  
1.4401 (316)  
2B

stainless steel  
EN 10088

# DESIGN, DEVELOPMENT AND PRODUCTION OF COLD-FORMED STEEL PROFILES AND STRUCTURES

1991  
ano de  
fundação

Barraferros develops solutions for the construction, retrofit, energy, and agriculture sectors, with the goal of establishing cold-formed steel profiles as an efficient and sustainable solution for the construction of today and tomorrow.





## INDÚSTRIA

perfis para estrutura de suporte de cobertura e fachada

## INDUSTRY

sections for roof and facade cladding structure



## HABITAÇÃO

perfis para pilares, vigas, paredes, pisos e cobertura

## RESIDENCE

sections for columns, beams, walls, floors and roof



## ENERGIA

perfis para estrutura de suporte de painéis fotovoltaicos

## ENERGY

sections for photovoltaic panels support structure



## AGRICULTURA

perfis para culturas agrícolas e estufas

## AGRICULTURE

sections for agriculture culture and greenhouses





EN 1090-1:2009 + A1:2011  
Conformidade do Controlo de  
Produção em Fábrica  
Factory Production Control Conformity  
EXC2 (EN 1090-4)



ISO 45001:2018  
Sistema de Gestão da Segurança e Saúde  
no Trabalho  
Occupational Health and Safety  
Management System



ISO 9001:2015  
Sistema de Gestão da Qualidade  
Quality Management System

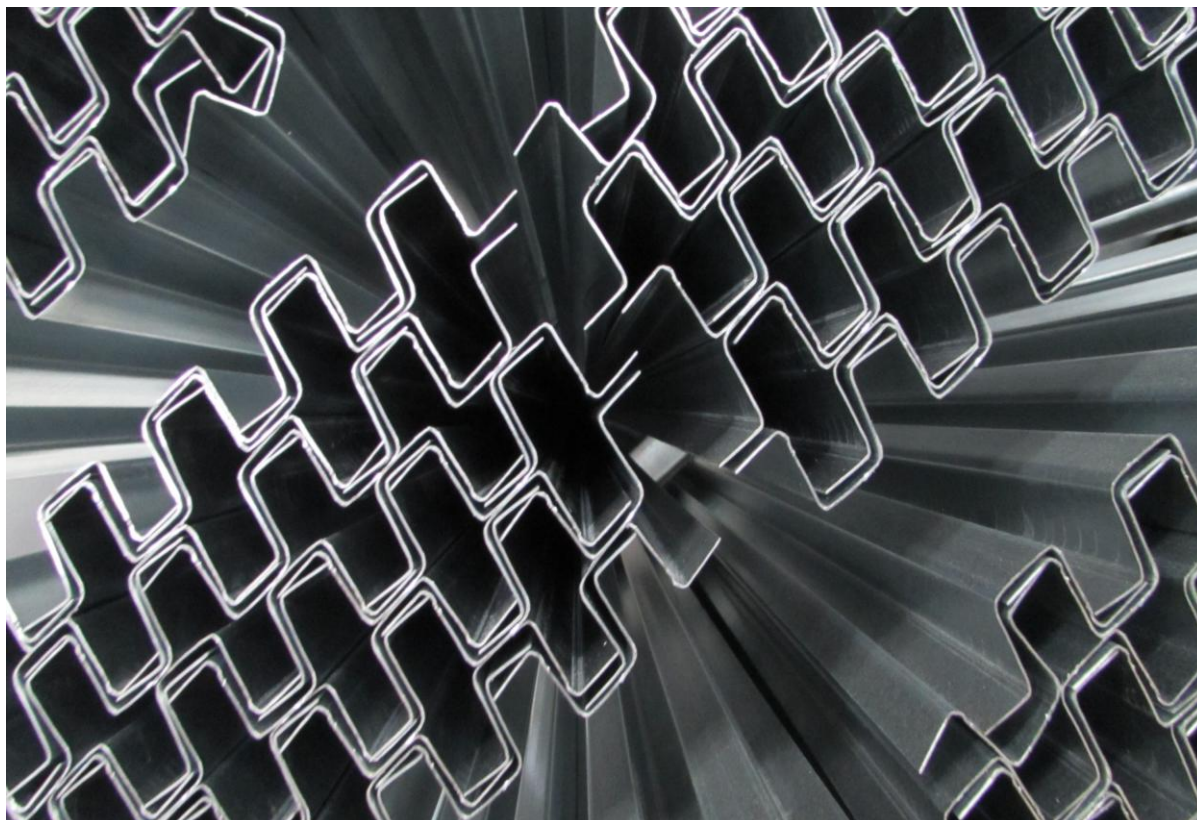


ISO 50001:2018  
Sistema de Gestão de Energia  
Energy Management System



**PME líder**

PME Líder (IAPMEI)  
desde 2018  
since 2018

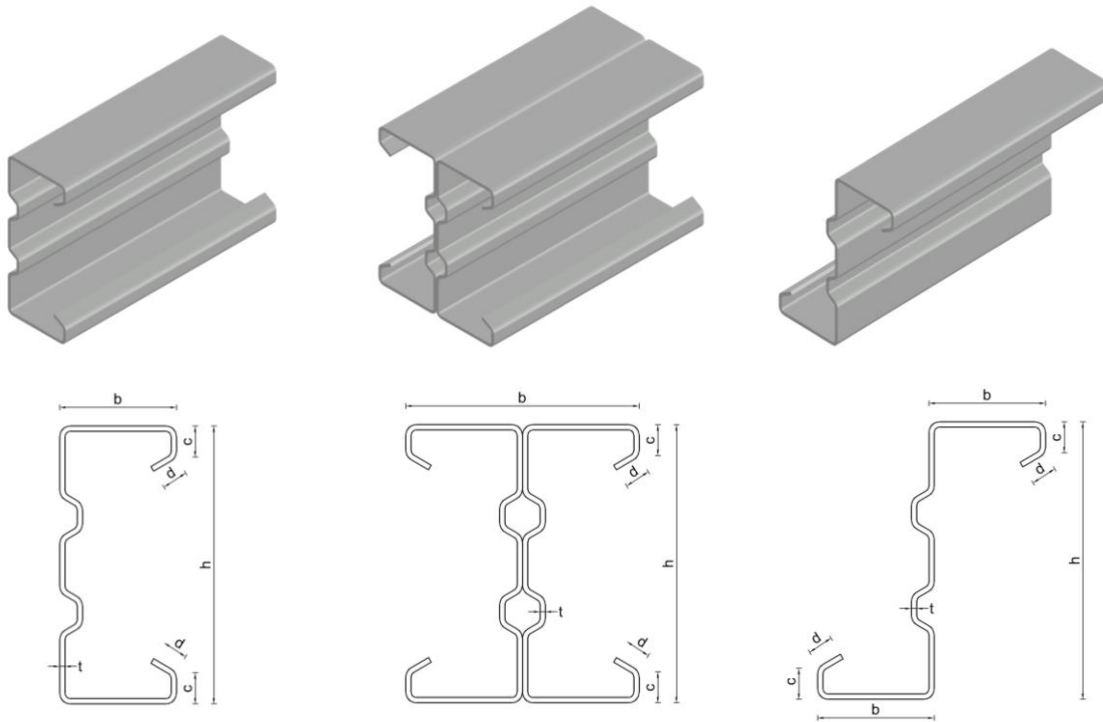


**APLICAÇÃO**

Pilares, vigas, coberturas, pórticos, pisos, madres  
Comprimento e furação de acordo com os requisitos

**APPLICATION**

Columns, beams, roofs, frames, purlins  
Length and holes according to specifications



**B-SIGMA**

**B2-SIGMA**

**BZ-SIGMA**

Seção Section	h (mm)	b (mm)	c (mm)	d (mm)	t <sub>nom</sub> (mm)	P (kg/m)
B-SIGMA / Z-SIGMA 300X2.0	300	60	24	18	2.0	8.40
B-SIGMA / Z-SIGMA 300X2.5					2.5	10.50
B-SIGMA / Z-SIGMA 300X3.0					3.0	12.60
B-SIGMA / Z-SIGMA 300X4.0					4.0	16.80
B-SIGMA / Z-SIGMA 350X2.0	350	70	24	18	2.0	9.44
B-SIGMA / Z-SIGMA 350X2.5					2.5	11.80
B-SIGMA / Z-SIGMA 350X3.0					3.0	14.16
B-SIGMA / Z-SIGMA 350X4.0					4.0	18.88
B-SIGMA / Z-SIGMA 400X2.0	400	80	24	18	2.0	10.48
B-SIGMA / Z-SIGMA 400X2.5					2.5	13.10
B-SIGMA / Z-SIGMA 400X3.0					3.0	15.72
B-SIGMA / Z-SIGMA 400X4.0					4.0	20.96
B-SIGMA / Z-SIGMA 450X2.0	450	90	24	18	2.0	11.52
B-SIGMA / Z-SIGMA 450X2.5					2.5	14.40
B-SIGMA / Z-SIGMA 450X3.0					3.0	17.28
B-SIGMA / Z-SIGMA 450X4.0					4.0	23.04
B2-SIGMA 300X2.0	300	120	24	18	2.0	16.80
B2-SIGMA 300X2.5					2.5	21.00
B2-SIGMA 300X3.0					3.0	25.20
B2-SIGMA 300X4.0					4.0	33.60
B2-SIGMA 350X2.0	350	140	24	18	2.0	18.88
B2-SIGMA 350X2.5					2.5	23.60
B2-SIGMA 350X3.0					3.0	28.32
B2-SIGMA 350X4.0					4.0	37.76
B2-SIGMA 400X2.0	400	160	24	18	2.0	20.96
B2-SIGMA 400X2.5					2.5	26.20
B2-SIGMA 400X3.0					3.0	31.44
B2-SIGMA 400X4.0					4.0	41.92
B2-SIGMA 450X2.0	450	180	24	18	2.0	23.04
B2-SIGMA 450X2.5					2.5	28.80
B2-SIGMA 450X3.0					3.0	34.56
B2-SIGMA 450X4.0					4.0	46.08

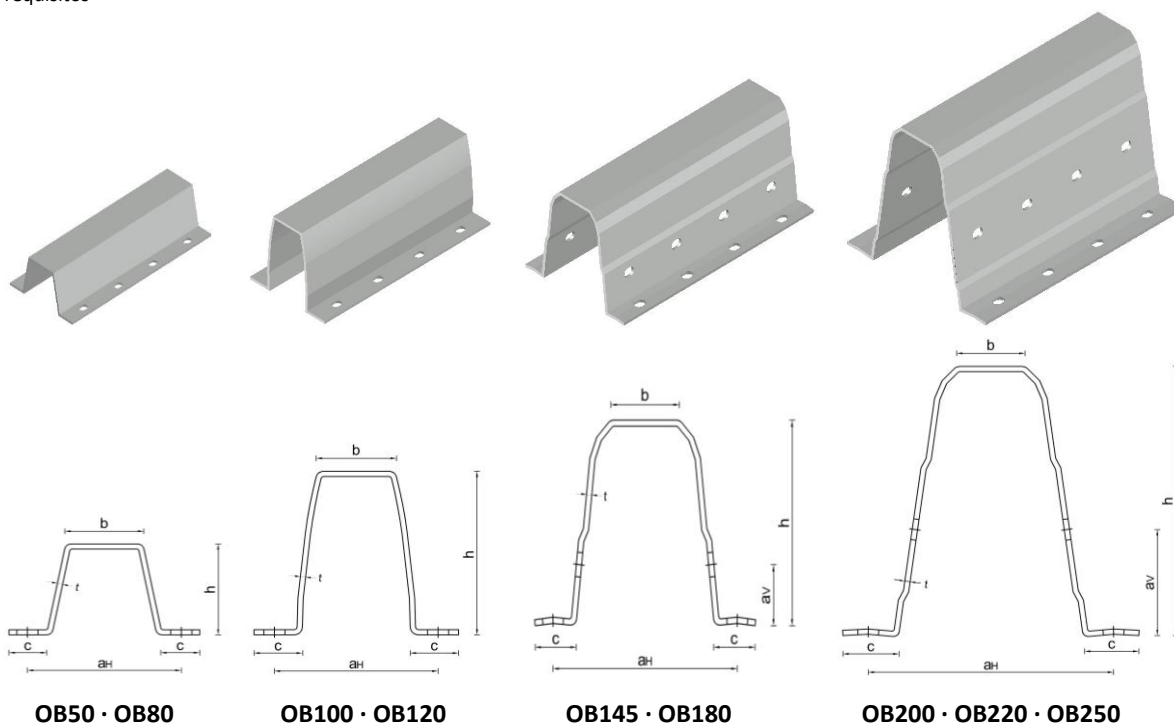
## OMEGA OB

### APLICAÇÃO

Estrutura para revestimento de cobertura e fachada (madres)  
 Estrutura para painéis fotovoltaicos  
 Furos ovais com afastamentos de 50 mm ou de acordo com os requisitos

### APPLICATION

Structure for roof and facade cladding (purlins and side rails)  
 Structure for photovoltaic panels  
 Oval holes with 50 mm spacing or according to specifications



**OB50 · OB80**

**OB100 · OB120**

**OB145 · OB180**

**OB200 · OB220 · OB250**

Seção Section	h (mm)	b (mm)	c (mm)	t <sub>nom</sub> (mm)	Ø (mm)	a <sub>H</sub> (mm)	a <sub>V</sub> (mm)	P (kg/m)		
OB50x1.2	50	42	22	1.2	9.0x13.0 //50	82	--	1.70		
OB50x1.5				1.5					2.12	
OB80x1.2	80		26	1.2				100	4.00	
OB80x1.5				1.5						3.00
OB80x2.0	100		30	2.0		150		37	4.00	
OB100x1.5				1.5					3.52	
OB100x2.0				2.0					4.69	
OB120x1.5				1.5					3.96	
OB120x2.0	120	2.0	5.28							
OB145x1.5	143	56	32	1.5	12.5x14.5 //50	200	80	4.86		
OB145x2.0				2.0				6.48		
OB145x2.5				2.5				8.10		
OB180x1.5	183		38	1.5				150	34	5.94
OB180x2.0				2.0						7.92
OB180x2.5				2.5						9.90
OB200x1.5	195	44	44	1.5	200	80	6.30			
OB200x2.0				2.0			8.40			
OB200x2.5				2.5			10.50			
OB220x1.5				220			44	1.5	200	80
OB220x2.0	2.0		9.44							
OB220x2.5	2.5		11.80							
OB250x1.5	250		48					1.5		
OB250x2.0				2.0			10.48			
OB250x2.5		2.5		13.10						
OB250x3.0		3.0		15.72						



**APLICAÇÃO**

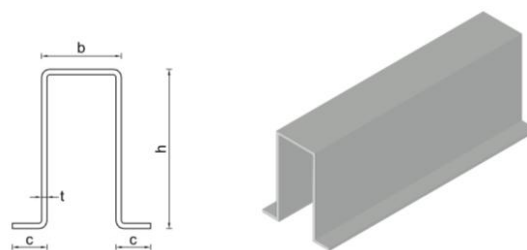
Estrutura para revestimento de cobertura e fachada (madres)

Comprimento e furação de acordo com os requisitos

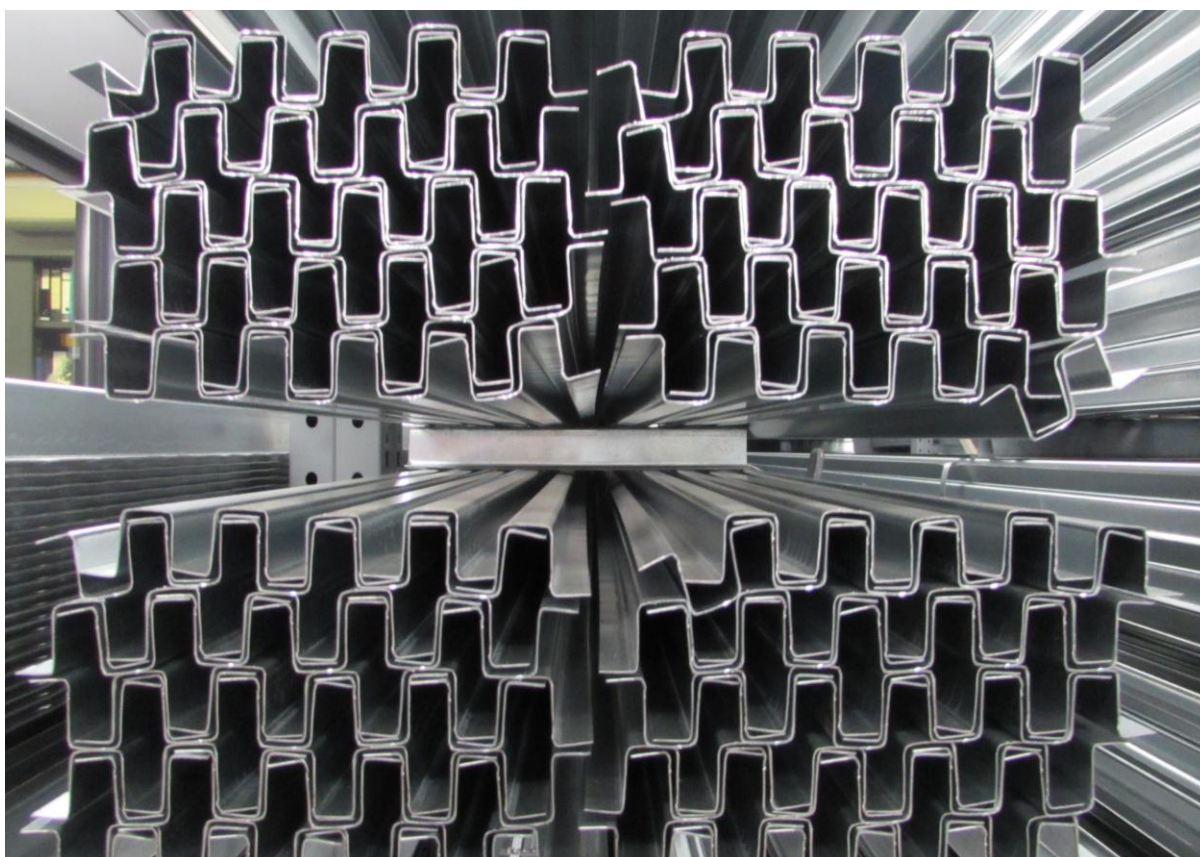
**APPLICATION**

Structure for roof and facade cladding (purlins and side rails)

Length and holes according to specifications



Seção Section	h (mm)	b (mm)	c (mm)	t <sub>nom</sub> (mm)	P (kg/m)
O40/40/15x1.5	40	40	15	1.5	1.66
O50/40/16x1.5	50		16	1.5	1.92
O50/40/18x2.0			18	2.0	2.56
O80/60/21x1.5	80	60	21	1.5	3.00
O80/60/23x2.0			23	2.0	4.00
O100/65/20x1.5	100	65	20	1.5	3.52
O100/65/22x2.0			22	2.0	4.69
O100/65/24x2.5			24	2.5	5.86
O110/65/19x1.5	110	65	19	1.5	3.72
O110/65/21x2.0			21	2.0	4.96
O110/65/23x2.5			23	2.5	6.20
O120/65/19x1.5	120	65	19	1.5	3.96
O120/65/21x2.0			21	2.0	5.28
O120/65/23x2.5			23	2.5	6.60
O140/65/19x1.5	140	65	19	1.5	4.44
O140/65/21x2.0			21	2.0	5.92
O140/65/23x2.5			23	2.5	7.40
O160/65/16x1.5	160	65	16	1.5	4.86
O160/65/18x2.0			18	2.0	6.48
O160/65/20x2.5			20	2.5	8.10



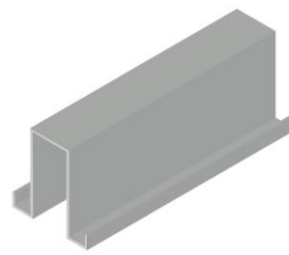
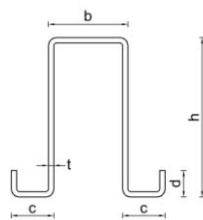
## OMEGA R

### APLICAÇÃO

Madres para cobertura e fachada de pavilhões industriais  
Comprimento e furação de acordo com os requisitos

### APPLICATION

Purlins and side rails for industrial buildings  
Length and holes according to specifications



Seção Section	h (mm)	b (mm)	c (mm)	d (mm)	t <sub>nom</sub> (mm)	P (kg/m)
OR100/60/16/7x1.5	98	60	16	7	1.5	3.32
OR100/60/16/9x2.0				9	2.0	4.43
OR100/65/20/12x1.5	100	65	20	12	1.5	3.72
OR100/65/20/15x2.0				15	2.0	4.96
OR100/65/20/18x2.5				18	2.5	6.20
OR120/65/20/9x1.5	120	65	20	9	1.5	4.14
OR120/65/20/12x2.0				12	2.0	5.52
OR120/65/20/15x2.5				15	2.5	6.90
OR130/60/16/7x1.5	125	60	16	7	1.5	4.14
OR130/60/16/9x2.0				9	2.0	5.52
OR130/65/20/7x1.5	135	65	20	7	1.5	4.44
OR130/65/20/10x2.0				10	2.0	5.92
OR130/65/20/13x2.5				13	2.5	7.40
OR150/65/20/9x1.5	150	65	20	9	1.5	4.86
OR150/65/20/12x2.0				12	2.0	6.48
OR150/65/20/15x2.5				15	2.5	8.10
OR160/65/20/9x1.5	160	65	20	9	1.5	5.10
OR160/65/20/12x2.0				12	2.0	6.80
OR160/65/20/15x2.5				15	2.5	8.50

Omega R b = 60 mm económica economic

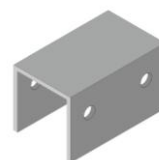
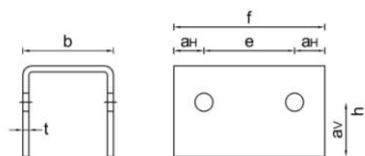
## SUPORTE · SUPPORT

### APLICAÇÃO

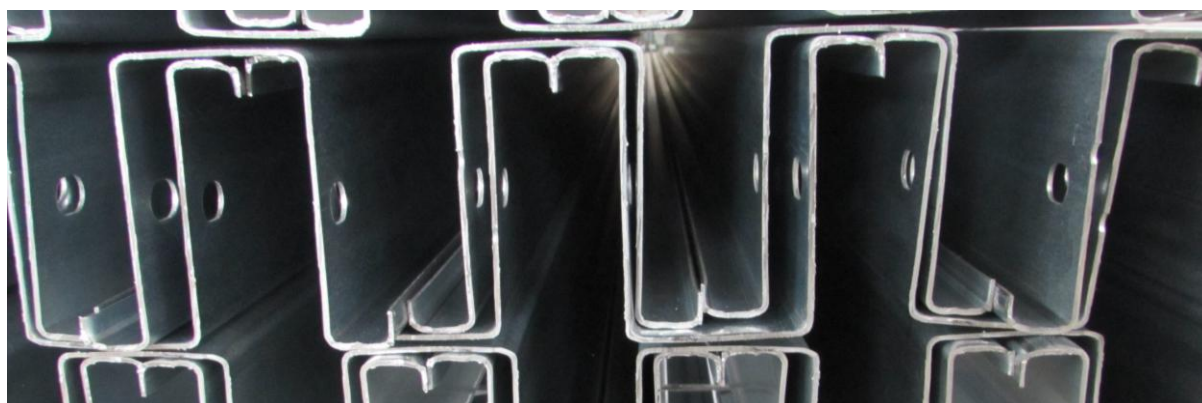
Ligação para perfil OMEGA R

### APPLICATION

Connection for section OMEGA R



Seção Section	h (mm)	b (mm)	∅ (mm)	aH (mm)	e (mm)	f (mm)	aV (mm)	t <sub>nom</sub> (mm)	P (kg/m)
SUP 2.0	70	60	14	28	70	125	40	2.0	3.07
SUP 2.5								2.5	3.84



**APLICAÇÃO**

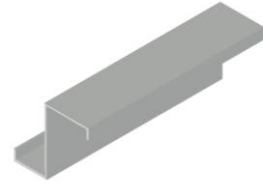
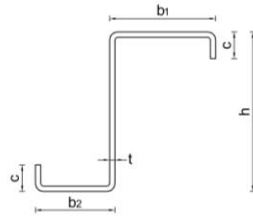
Estrutura para revestimento de cobertura e fachada (madres)

Comprimento e furação de acordo com os requisitos

**APPLICATION**

Structure for roof and facade cladding (purlins and side rails)

Length and holes according to specifications



Seção Section	h (mm)	b <sub>1</sub> (mm)	b <sub>2</sub> (mm)	c (mm)	t <sub>nom</sub> (mm)	P (kg/m)		
Z160/50-50/15x1.5	160	50	50	15	1.5	3.32		
Z160/50-50/17x2.0				17	2.0	4.43		
Z160/60-60/21x1.5				60	60	21	1.5	3.72
Z160/60-60/23x2.0						23	2.0	4.96
Z160/60-60/25x2.5		25	2.5			6.20		
Z160/70-60/16x1.5		70	60			16	1.5	3.72
Z160/70-60/18x2.0				18	2.0	4.96		
Z160/70-60/20x2.5				20	2.5	6.20		
Z160/70-70/11x1.5				70	70	11	1.5	3.72
Z160/70-70/13x2.0		13	2.0			4.96		
Z160/70-70/15x2.5		15	2.5			6.20		
Z170/60-60/16x1.5		170	60			60	16	1.5
Z170/60-60/18x2.0	18			2.0	4.96			
Z170/60-60/20x2.5	20			2.5	6.20			
Z180/60-60/21x1.5	60			60	21		1.5	3.96
Z180/60-60/23x2.0			23		2.0	5.28		
Z180/60-60/25x2.5			25		2.5	6.60		
Z180/70-60/16x1.5			70		60	16	1.5	3.96
Z180/70-60/18x2.0	18			2.0		5.28		
Z180/70-60/20x2.5	20			2.5		6.60		
Z180/70-70/19x1.5	70			70		19	1.5	4.14
Z180/70-70/21x2.0			21		2.0	5.52		
Z180/70-70/23x2.5			23		2.5	6.90		
Z200/60-60/19x1.5		200	60		60	19	1.5	4.14
Z200/60-60/21x2.0	21			2.0		5.52		
Z200/60-60/23x2.5	23			2.5		6.90		
Z200/70-60/14x1.5	70			60		14	1.5	4.14
Z200/70-60/16x2.0			16		2.0	5.52		
Z200/70-60/18x2.5			18		2.5	6.90		
Z200/70-70/21x1.5			70		70	21	1.5	4.44
Z200/70-70/23x2.0	23			2.0		5.92		
Z200/70-70/25x2.5	25			2.5		7.40		
Z200/80-70/16x1.5	80			70		16	1.5	4.44
Z200/80-70/18x2.0			18		2.0	5.92		
Z200/80-70/20x2.5			20		2.5	7.40		
Z220/60-60/21x1.5		220	60		60	21	1.5	4.44
Z220/60-60/23x2.0	23			2.0		5.92		
Z220/60-60/25x2.5	25			2.5		7.40		
Z220/70-60/16x1.5	70			60		16	1.5	4.44
Z220/70-60/18x2.0			18		2.0	5.92		
Z220/70-60/20x2.5			20		2.5	7.40		
Z225/80-70/25x2.5			225		80	70	25	2.5
Z225/80-70/27x3.0	27			3.0			9.72	

Seção Section	h (mm)	b <sub>1</sub> (mm)	b <sub>2</sub> (mm)	c (mm)	t <sub>nom</sub> (mm)	P (kg/m)		
Z240/60-60/13x2.0	240	60	60	13	2.0	5.92		
Z240/60-60/15x2.5				15	2.5	7.40		
Z240/70-60/24x1.5				70	60	24	1.5	4.86
Z240/70-60/26x2.0						26	2.0	6.48
Z240/70-60/28x2.5		28	2.5			8.10		
Z240/70-70/19x1.5		70	70			19	1.5	4.86
Z240/70-70/21x2.0				21	2.0	6.48		
Z240/70-70/23x2.5				23	2.5	8.10		
Z240/80-70/14x1.5				80	70	14	1.5	4.86
Z240/80-70/16x2.0		16	2.0			6.48		
Z240/80-70/18x2.5		18	2.5			8.10		
Z250/60-60/24x1.5		250	60			60	24	1.5
Z250/60-60/26x2.0	26			2.0	6.48			
Z250/60-60/28x2.5	28			2.5	8.10			
Z250/70-60/19x1.5	70			60	19		1.5	4.86
Z250/70-60/21x2.0			21		2.0	6.48		
Z250/70-60/23x2.5			23		2.5	8.10		
Z250/70-70/14x1.5			70		70	14	1.5	4.86
Z250/70-70/16x2.0	16			2.0		6.48		
Z250/70-70/18x2.5	18			2.5		8.10		
Z250/80-70/19x1.5	80			70		19	1.5	5.10
Z250/80-70/21x2.0			21		2.0	6.80		
Z250/80-70/23x2.5			23		2.5	8.50		
Z260/60-60/19x1.5		260	60		60	19	1.5	4.86
Z260/60-60/21x2.0	21			2.0		6.48		
Z260/60-60/23x2.5	23			2.5		8.10		
Z260/70-60/14x1.5	70			60		14	1.5	4.86
Z260/70-60/16x2.0			16		2.0	6.48		
Z260/70-60/18x2.5			18		2.5	8.10		
Z300/70-60/26x1.5			300		70	60	26	1.5
Z300/70-60/28x2.0	28			2.0			7.52	
Z300/70-60/28x2.5	28			2.5			9.30	
Z300/70-60/27x3.0	27			3.0			11.04	
Z300/70-70/21x1.5	70			70	21	1.5	5.64	
Z300/70-70/23x2.0					23	2.0	7.52	
Z300/70-70/23x2.5		23			2.5	9.30		
Z300/70-70/22x3.0		22			3.0	11.04		
Z300/80-70/16x1.5	80	70		16	1.5	5.64		
Z300/80-70/18x2.0				18	2.0	7.52		
Z300/80-70/18x2.5				18	2.5	9.30		
Z300/80-70/17x3.0				17	3.0	11.04		
Z300/80-80/25x3.0	80	80	25	3.0	11.64			
Z375/96-85/30x4.0			375	96	85	30	4.0	18.40



**APLICAÇÃO**

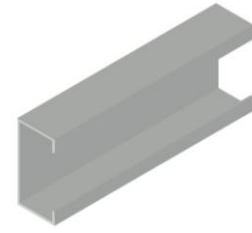
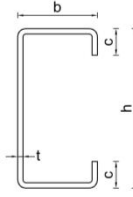
Estrutura para revestimento de cobertura e fachada (madres)

Comprimento e furação de acordo com os requisitos

**APPLICATION**

Structure for roof and facade cladding (purlins and side rails)

Length and holes according to specifications



Seção Section	h (mm)	b (mm)	c (mm)	t <sub>nom</sub> (mm)	P (kg/m)	
C100/50/13x1.5	100	50	13	1.5	2.57	
C100/50/15x2.0			15	2.0	3.42	
C100/55/15x2.0		55	15	2.0	3.58	
C100/55/17x2.5			17	2.5	4.48	
C120/55/16x1.5	120	55	16	1.5	3.00	
C120/55/18x2.0			18	2.0	4.00	
C120/55/20x2.5		60	20	2.5	5.00	
C120/60/11x1.5			11	1.5	3.00	
C120/60/13x2.0	60	13	2.0	4.00		
C120/60/15x2.5		15	2.5	5.00		
C140/50/11x1.5	140	50	11	1.5	3.00	
C140/50/13x2.0			13	2.0	4.00	
C140/50/15x2.5			15	2.5	5.00	
C140/55/20x1.5			55	20	1.5	3.32
C140/55/22x2.0		22		2.0	4.43	
C140/60/15x1.5		60	15	1.5	3.32	
C140/60/17x2.0			17	2.0	4.43	
C140/65/18x1.5		65	18	1.5	3.52	
C140/65/20x2.0			20	2.0	4.69	
C140/70/21x1.5		70	21	1.5	3.72	
C140/70/23x2.0			23	2.0	4.96	
C140/70/25x2.5			25	2.5	6.20	
C150/50/20x1.5	150	50	20	1.5	3.32	
C150/50/22x2.0			22	2.0	4.43	
C150/55/15x1.5		55	15	1.5	3.32	
C150/55/17x2.0			17	2.0	4.43	
C150/60/18x1.5		60	18	1.5	3.52	
C150/60/20x2.0			20	2.0	4.69	
C150/65/13x1.5		65	13	1.5	3.52	
C150/65/15x2.0			15	2.0	4.69	
C150/70/16x1.5		70	16	1.5	3.72	
C150/70/18x2.0			18	2.0	4.96	
C150/70/20x2.5			20	2.5	6.20	
C160/50/15x1.5		160	50	15	1.5	3.32
C160/50/17x2.0				17	2.0	4.43
C160/55/18x1.5			55	18	1.5	3.52
C160/55/20x2.0				20	2.0	4.69
C160/60/21x1.5			60	21	1.5	3.72
C160/60/23x2.0	23			2.0	4.96	
C160/60/25x2.5			25	2.5	6.20	
C160/65/16x1.5	65		16	1.5	3.72	
C160/65/18x2.0			18	2.0	4.96	
C160/65/20x2.5			20	2.5	6.20	
C160/70/11x1.5	70		11	1.5	3.72	
C160/70/21x1.5			21	1.5	3.96	
C160/70/13x2.0			13	2.0	4.96	
C160/70/23x2.0			23	2.0	5.28	
C160/70/15x2.5			15	2.5	6.20	
C160/70/25x2.5			25	2.5	6.60	
C170/60/16x1.5	170	60	16	1.5	3.72	
C170/60/18x2.0			18	2.0	4.96	
C170/60/20x2.5			20	2.5	6.20	
C180/60/21x1.5		60	21	1.5	3.96	
C180/60/23x2.0	23		2.0	5.28		
C180/60/25x2.5		25	2.5	6.60		
C180/65/16x1.5	65	16	1.5	3.96		
C180/65/18x2.0		18	2.0	5.28		
C180/65/20x2.5		20	2.5	6.60		
C180/70/19x1.5	70	19	1.5	4.14		
C180/70/21x2.0		21	2.0	5.52		
C180/70/23x2.5		23	2.5	6.90		
C200/50/11x1.5		200	50	11	1.5	3.72
C200/50/13x2.0	13			2.0	4.96	
C200/50/15x2.5	15			2.5	6.20	
C200/55/16x1.5	55		16	1.5	3.96	
C200/55/18x2.0			18	2.0	5.28	
C200/55/20x2.5			20	2.5	6.60	
C200/60/19x1.5	60		19	1.5	4.14	
C200/60/21x2.0			21	2.0	5.52	
C200/60/23x2.5			23	2.5	6.90	

Seção Section	h (mm)	b (mm)	c (mm)	t <sub>nom</sub> (mm)	P (kg/m)	
C200/65/14x1.5	200	65	14	1.5	4.14	
C200/65/16x2.0			16	2.0	5.52	
C200/65/18x2.5			18	2.5	6.90	
C200/70/21x1.5			70	21	1.5	4.44
C200/70/23x2.0	23	2.0		5.92		
C200/70/25x2.5		25	2.5	7.40		
C220/55/14x1.5	220	55	14	1.5	4.14	
C220/55/16x2.0			16	2.0	5.52	
C220/55/18x2.5			18	2.5	6.90	
C220/60/21x1.5		60	21	1.5	4.44	
C220/60/23x2.0			23	2.0	5.92	
C220/60/25x2.5			25	2.5	7.40	
C220/65/16x1.5		65	16	1.5	4.44	
C220/65/18x2.0			18	2.0	5.92	
C220/65/20x2.5			20	2.5	7.40	
C220/70/11x1.5		70	11	1.5	4.44	
C220/70/13x2.0			13	2.0	5.92	
C220/70/15x2.5			15	2.5	7.40	
C225/80/16x1.5	225	80	16	1.5	4.86	
C225/80/18x2.0			18	2.0	6.48	
C225/80/20x2.5			20	2.5	8.10	
C225/80/22x3.0			22	3.0	9.72	
C225/80/26x4.0			26	4.0	12.96	
C240/55/16x1.5			240	55	16	1.5
C240/55/18x2.0	18	2.0			5.92	
C240/55/20x2.5	60	20		2.5	7.40	
C240/60/13x2.0		13		2.0	5.92	
C240/60/15x2.5	15	2.5		7.40		
C240/70/19x1.5	70	19		1.5	4.86	
C240/70/21x2.0		21	2.0	6.48		
C240/70/23x2.5		23	2.5	8.10		
C250/60/24x1.5	250	60	24	1.5	4.86	
C250/60/26x2.0			26	2.0	6.48	
C250/60/28x2.5		65	28	2.5	8.10	
C250/65/19x1.5			19	1.5	4.86	
C250/65/21x2.0		21	2.0	6.48		
C250/65/23x2.5		23	2.5	8.10		
C250/70/14x1.5	260	70	14	1.5	4.86	
C250/70/16x2.0			16	2.0	6.48	
C250/70/18x2.5		65	18	2.5	8.10	
C260/60/19x1.5			19	1.5	4.86	
C260/60/21x2.0		60	21	2.0	6.48	
C260/60/23x2.5			23	2.5	8.10	
C260/65/14x1.5	270	65	14	1.5	4.86	
C260/65/16x2.0			16	2.0	6.48	
C260/65/18x2.5		70	18	2.5	8.10	
C260/70/19x1.5			19	1.5	5.10	
C260/70/21x2.0		21	2.0	6.80		
C260/70/23x2.5		23	2.5	8.50		
C275/80/25x2.5	275	80	25	2.5	9.30	
C275/80/25x3.0			25	3.0	11.04	
C280/60/19x1.5	280	60	19	1.5	5.10	
C280/60/21x2.0			21	2.0	6.80	
C280/60/23x2.5			23	2.5	8.50	
C280/65/14x1.5		65	14	1.5	5.10	
C280/65/16x2.0			16	2.0	6.80	
C280/65/18x2.5			18	2.5	8.50	
C300/70/21x1.5	300	70	21	1.5	5.64	
C300/70/23x2.0			23	2.0	7.52	
C300/70/23x2.5			23	2.5	9.30	
C300/70/27x3.0		75	27	3.0	11.28	
C300/75/18x2.5			18	2.5	9.30	
C300/75/22x3.0			22	3.0	11.28	
C300/80/25x3.0	325	80	25	3.0	11.64	
C325/65/14x1.5			65	14	1.5	5.64
C325/65/16x2.0				16	2.0	7.52
C325/65/15x2.5				15	2.5	9.30
C325/65/20x3.0	20	3.0		11.28		

**APLICAÇÃO**

Perfil de separação entre o revestimento de cobertura existente e novo

**FIG A** – a reentrância no banzo inferior permite acomodar os parafusos do revestimento existente

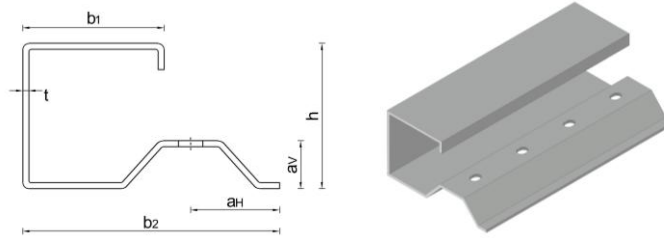
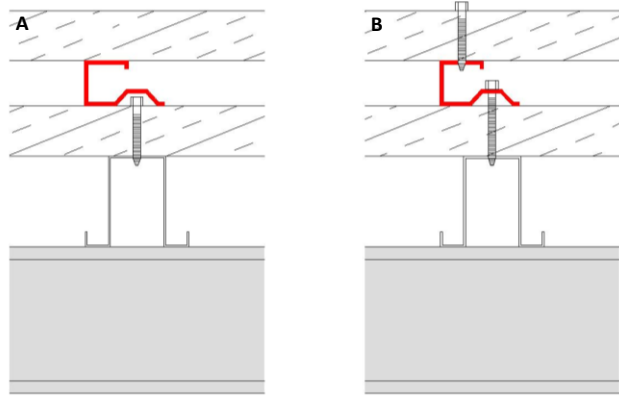
**FIG B** – banzo superior para fixar o revestimento novo e furação no banzo inferior para fixar o perfil G40 à estrutura existente

**APPLICATION**

Separation section between existing and new roof cladding

**FIG A** – the recess in the lower flange allows to accommodate the bolts from the existing cladding

**FIG B** – upper flange to fix the new cladding and holes in the lower flange to fix section G40 to the existing structure



Seção Section	h (mm)	b <sub>1</sub> (mm)	b <sub>2</sub> (mm)	t <sub>nom</sub> (mm)	∅ (mm)	av (mm)	a <sub>H</sub> (mm)	P (kg/m)
G40	38	35	64	1.5	9.0x15.0 // 50	15	22	1.66



## TUBULAR

### APLICAÇÃO

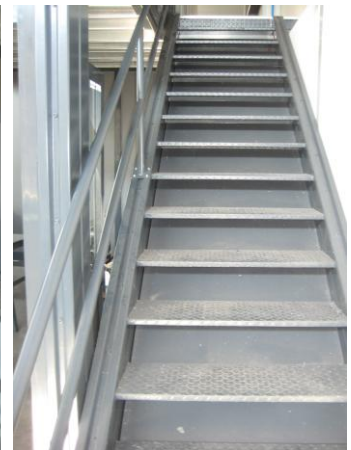
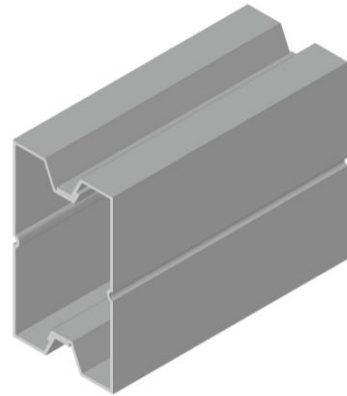
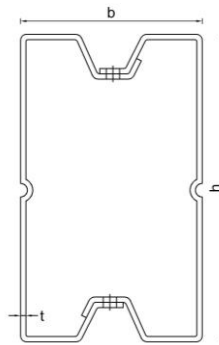
Viga e pilar para a execução de pisos, escadas e coberturas  
O perfil TUBULAR é composto por 2 secções ligadas por parafusos M8

### APPLICATION

Beam and column for the execution of floors, mezzanine, stairs and roofs

Section TUBULAR is the result of 2 sections connected by M8 bolts

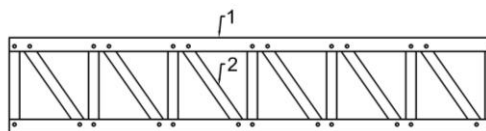
Seção Section	h (mm)	b (mm)	t <sub>nom</sub> (mm)	P (kg/m)
Tubular 170	170	100	2.5	12.40
Tubular 230	230			14.80
Tubular 265	265			16.20



**APLICAÇÃO**

Pisos, coberturas e platibandas

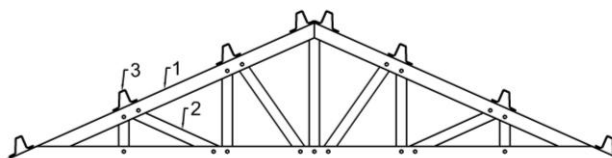
- (1) cordas definidas por perfil RBF ou CP
- (2) diagonais definidas por perfil UB40 ou UB60
- (3) a calha no banzo superior do perfil RBF permite a ligação a outros perfis através de parafuso rômbo



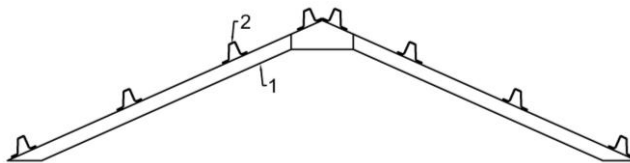
**APPLICATION**

Floors, roof and parapets

- (1) chords in section RBF or section CP
- (2) diagonals in section UB40 or UB60
- (3) the upper flange of RBF has a channel that allows the connection to other sections through rhombic bolts



## COBERTURA VÃO APROVEITADO · ATTIC ROOF



### APLICAÇÃO

Estrutura de cobertura com vão aproveitado

(1) viga definida pelas seguintes alternativas: TUBULAR, VIGA TRELIÇADA, RBF, RBF & OB35/40 ou RBF & UB120

(2) ripa definida pelas seguintes alternativas: OB40/20 ou OB60/20 para telha cerâmica, OB100, ÔMEGA ou ÔMEGA R para painel de cobertura

### APPLICATION

Structure for attic roof

(1) beam defined by the following alternatives: TUBULAR, TRUSS BEAM, RBF, RBF & OB35/40 or RBF & UB120

(2) purlin defined by the following alternatives: OB40/20 or OB60/20 for ceramic roof tiles, OB100, OMEGA or OMEGA R for roof panel



## RBF

### APLICAÇÃO

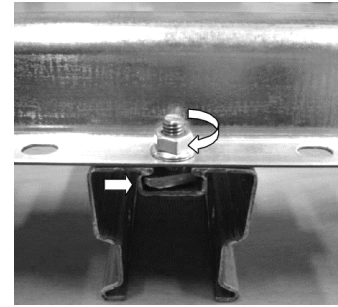
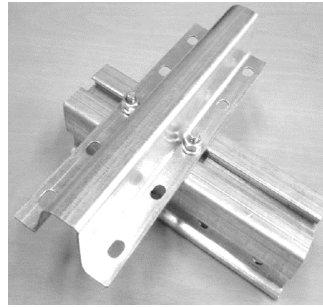
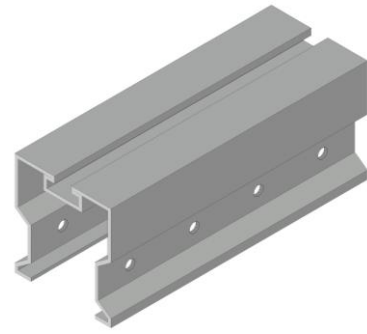
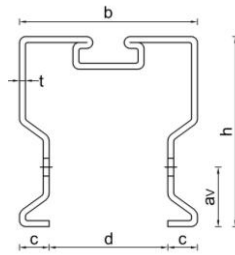
Viga treliçada, estrutura de cobertura, estrutura de suporte de painéis fotovoltaicos

Calha no banzo superior do perfil RBF permite a ligação a outros perfis através de parafuso rômbico

### APPLICATION

Truss beam, roof structure, support structure for photovoltaic panels

The channel on the upper flange of section RBF allows the connection to other sections through rhombic bolts



Estrutura de cobertura com fixação das ripas em qualquer posição simplificando a montagem em obra  
Roof structure with purlin connection in any position simplifying the construction on site

## RBF & OB35/40

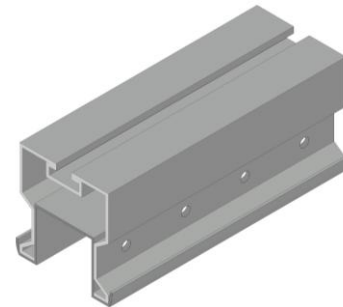
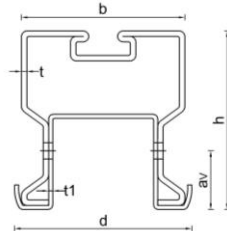
### APLICAÇÃO

Estrutura de cobertura com aproveitamento do vão  
Perfil composto pelas secções RBF e OB35/40 ligadas por parafusos M8

### APPLICATION

Attic roof

Section composed by sections RBF and OB35/40 connected by M8 bolts



## RBF & UB120

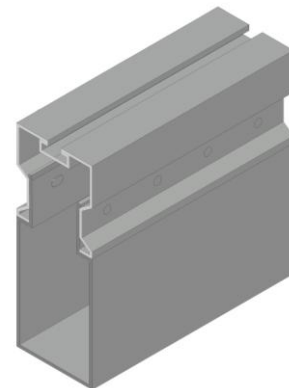
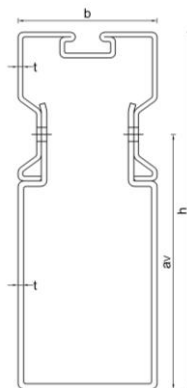
### APLICAÇÃO

Estrutura de cobertura com aproveitamento do vão  
Perfil composto pelas secções RBF e UB120 ligadas por parafusos M8

### APPLICATION

Attic roof

Section composed by sections RBF and UB120 connected by M8 bolts



Seção Section	h (mm)	b (mm)	c (mm)	d (mm)	t <sub>nom</sub> (mm)	Ø (mm)	av (mm)	P (kg/m)
RBF	64	60	10	40	2.0	9.0 // 50	20	3.58
RBF & OB35/40	66	60	--	65	2.0 / 1.5	9.0x13.0 // 50	22	5.24
RBF & UB120	154	60	--	--	2.0	9.0 // 50	110	8.54

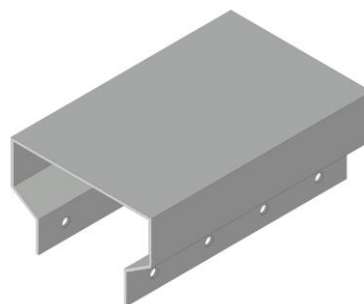
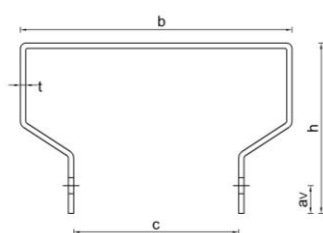
## CP

### APLICAÇÃO

Viga treliçada, estrutura de cobertura

### APPLICATION

Truss beam, roof structure



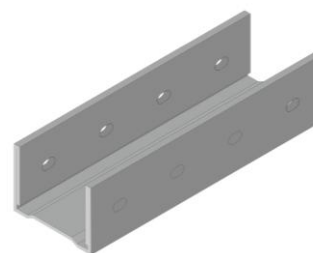
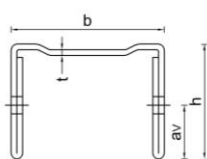
## UB40 · UB60

### APLICAÇÃO

Diagonal de viga treliçada  
 Perfil UB40 com perfil RBF  
 Perfil UB60 com perfil CP

### APPLICATION

Diagonal of truss beam  
 Section UB40 with section RBF  
 Section UB60 with section CP



Seção Section	h (mm)	b (mm)	c (mm)	t <sub>nom</sub> (mm)	∅ (mm)	av (mm)	P (kg/m)
CP	60	96	58	2.0	9.0 // 50	20	3.58
UB40	30	40	--	1.5	9.0x13.0 // 50	20	1.66
UB60	30	58	--	1.5	9.0x13.0 // 50	20	1.92



**APLICAÇÃO**

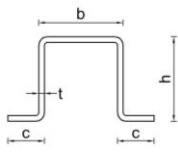
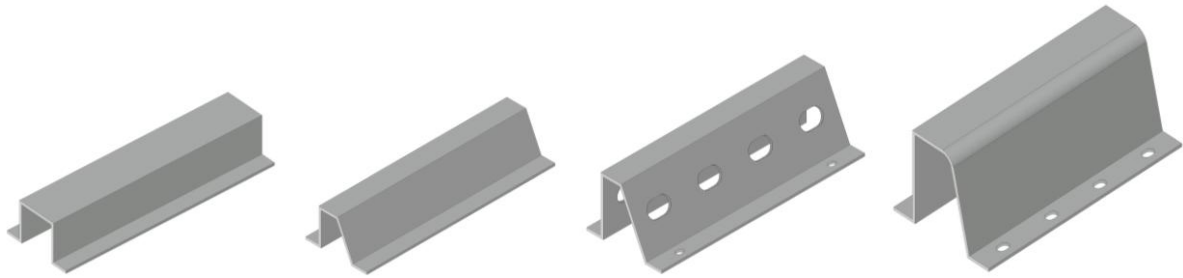
Perfis para suporte de telha cerâmica

- OB20/20, OB20/10 e OB30/10 como sub-ripa
- OB30/10 com furos nas almas para ventilação
- OB40/20 e OB60/20 como ripa

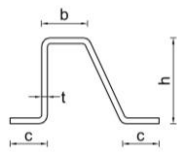
**APPLICATION**

Sections for the support of roof tile

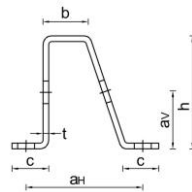
- OB20/20, OB20/10 and OB30/10 as sub-purlin
- OB30/10 with holes in the web for ventilation
- OB40/20 and OB60/20 as purlin



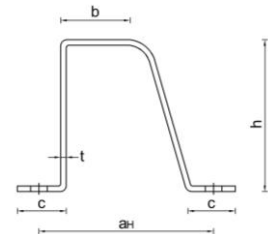
**OB20/20**



**OB20/10**



**OB30/10**



**OB40/20 · OB60/20**

Seção Section	h (mm)	b (mm)	c (mm)	t <sub>nom</sub> (mm)	∅ (mm)	a <sub>H</sub> (mm)	a <sub>V</sub> (mm)	P (kg/m)
OB20/20x0.6	20	20	16	0.6	--	--	--	0.42
OB20/10x0.6	20	10	15	0.6	--	--	--	0.39
OB20/10x1.0				1.0				0.66
OB30/10x0.8	30	10	16	0.8	H: 6.0x10.0 // 300 V: 14.0x20.0 // 100	46	15	0.65
OB30/10x1.0				1.0				0.82
OB40/20x1.5	40	20	20	1.5	13.0x9.0 // 50	80	--	1.66
OB60/20x1.2	55			1.2				1.70



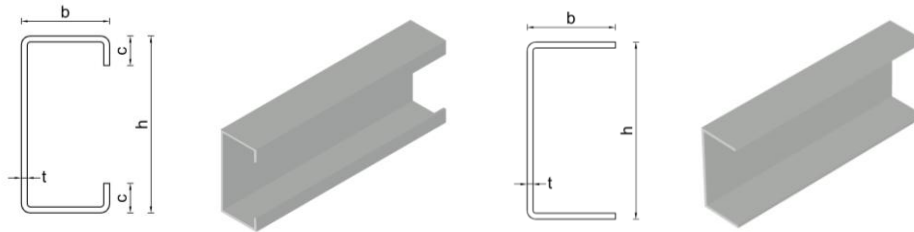
**APLICAÇÃO**

Estrutura de paredes, pisos e cobertura composta por perfis C (montantes) & U (canais)  
Comprimento e furação de acordo com os requisitos

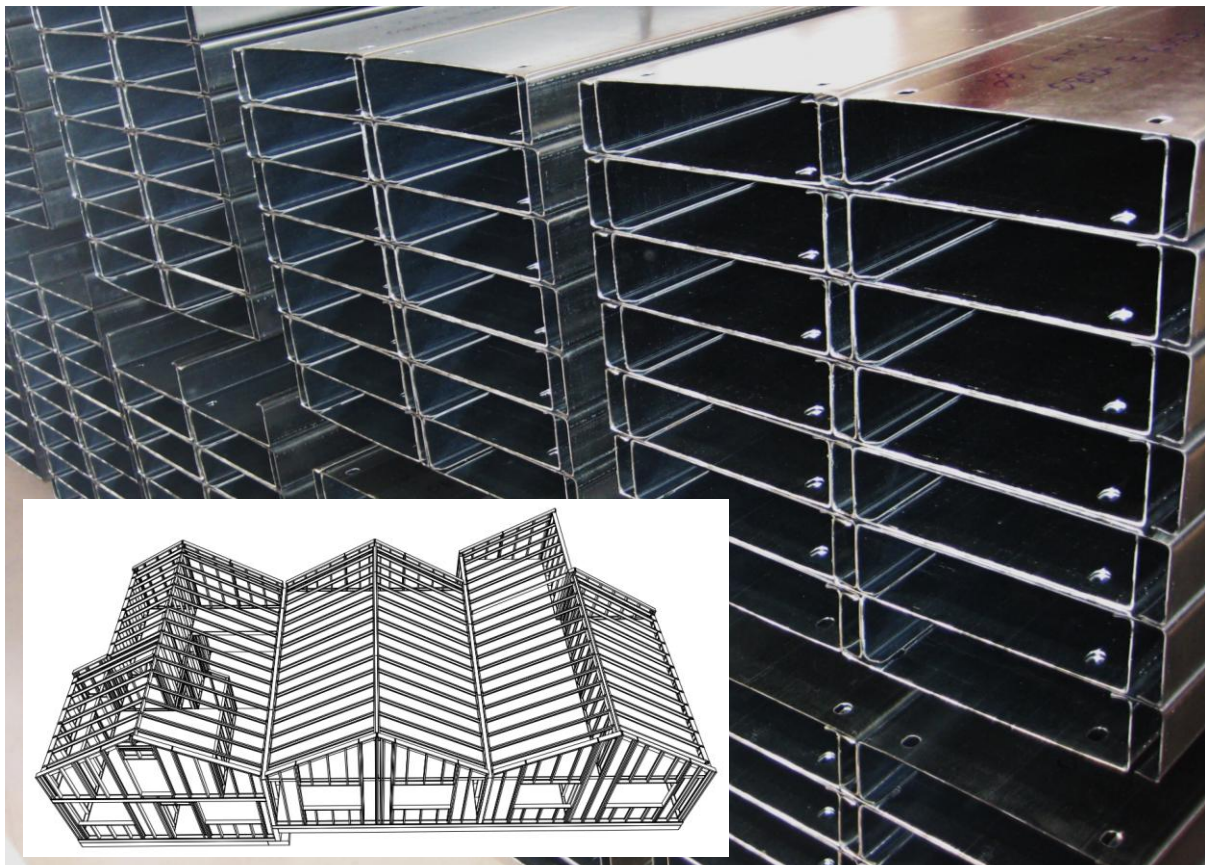


**APPLICATION**

Walls, floors and roofs structure composed by sections C (vertical) & U (channel)  
Length and holes according to specifications



Seção Section	h (mm)	b (mm)	c (mm)	t <sub>nom</sub> (mm)	P (kg/m)
C90/43/15x1.5	90	43	15	1.5	2.23
C150/43/15x1.5	150			1.5	3.00
C200/43/15x2.0	200			2.0	4.80
C250/43/15x2.5	250			2.5	6.90
U93/40x1.5	93	40	-	1.5	2.00
U153/40x1.5	153			1.5	2.72
U204/41x2.0	204			2.0	4.43
U255/43x2.5	255			2.5	6.60

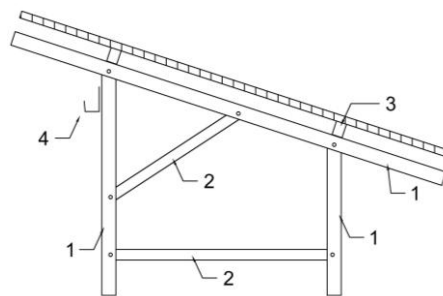


## PERFIS PARA PAINÉIS FOTOVOLTAICOS SECTIONS FOR PHOTOVOLTAIC PANELS

### APLICAÇÃO

Estrutura de suporte para painéis fotovoltaicos definida pelos perfis: (1) RBF, (2) UB40, (3) UF40/40 e USF35/45 e (4) CF

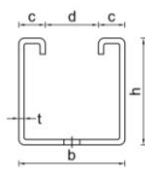
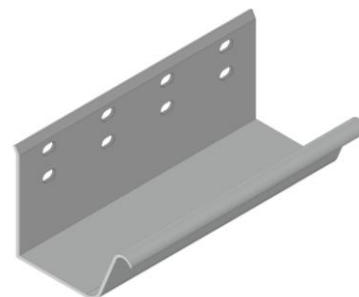
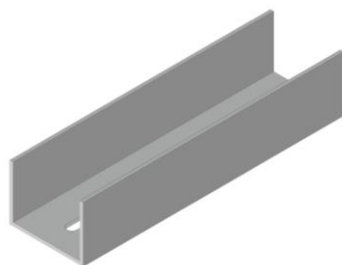
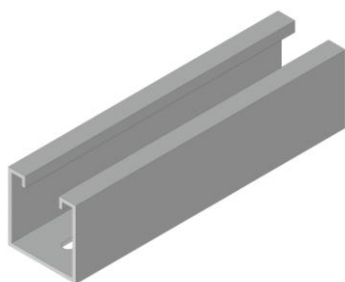
- UF40/40 – banzo superior preparado para porca M10 com mola para fixar perfil intermédio de ligação aos painéis fotovoltaicos
- USF35/45 – perfil de ligação para garantir continuidade entre UF40/40
- CF – perfil para passagem de cabos



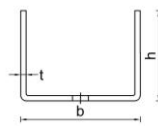
### APPLICATION

Support structure for photovoltaic panels defined by sections: (1) RBF, (2) UB40, (3) UF40/40 and USF34/45 and (4) CF

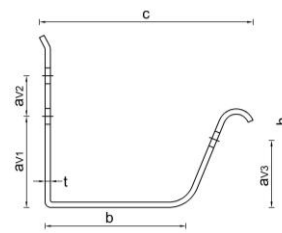
- UF40/40 – upper flange prepared for M10 nut with Spring to fix intermediate section of connection to photovoltaic panels
- USF35/45 – connection section between UF40/40 to guarantee continuity
- CF – section for cable running



UF



USF34/45



CF

Seção Section	h (mm)	b (mm)	c (mm)	t <sub>nom</sub> (mm)	∅ (mm)	a <sub>v1</sub> (mm)	a <sub>v2</sub> (mm)	a <sub>v3</sub> (mm)	P (kg/m)
UF40/30	40	30	10	1.2	9.0x24.0 // 50	--	--	--	1.27
UF40/40		40	10	2.0	9.0x24.0 // 50				2.08
USF34/45	34	45	--	2.0	9.0x24.0 // 50				1.68
CF	70	52	86	1.2	9.0x13.0 // 50	35	20	30	1.70

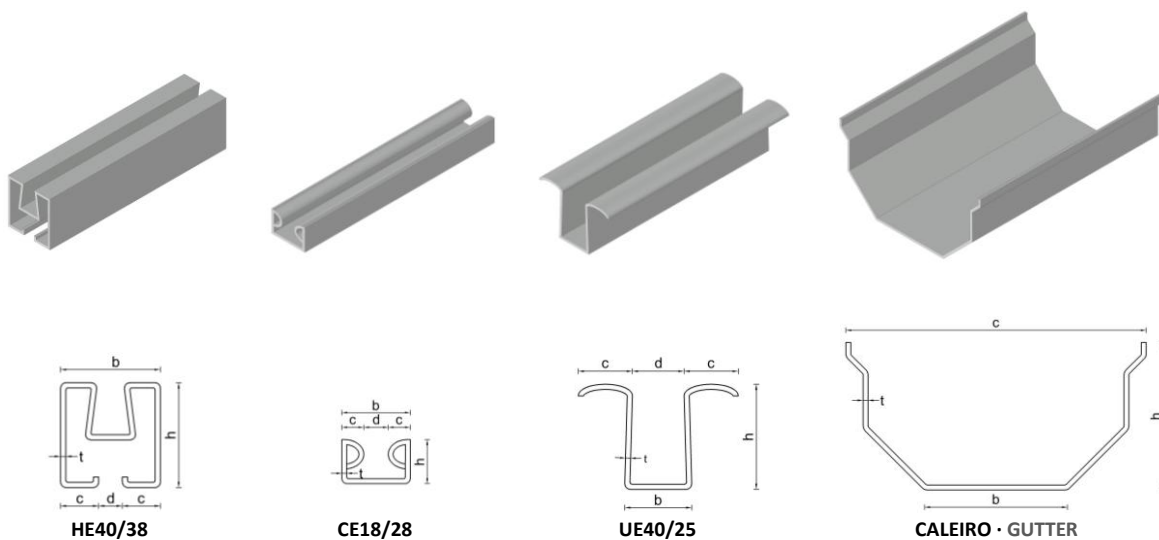


**APLICAÇÃO**

Perfis para clipar plástico: HE40/38, CE18/28, UE40/25  
 Caleiro para escoamento de água

**APPLICATION**

Sections to clip plastic: HE40/38, CE18/28, UE40/25  
 Gutter for water drainage



Seção Section	h (mm)	b (mm)	c (mm)	d (mm)	t <sub>nom</sub> (mm)	P (kg/m)
HE40/38	147	142	295	--	2.0	7.92
CE18/28	40	38	14	10	1.2	1.70
UE40/25	18	28	9	10	1.2	0.84
CALEIRO · GUTTER	40	25	20	21	1.5	1.56



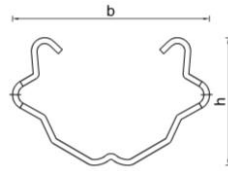
## ESTACA · STAKE

### APLICAÇÃO

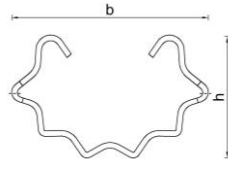
Estaca para diferentes culturas agrícolas  
Furos tipo Z nas almas com 100 mm de afastamento, 50 mm da extremidade, para fixação de arame

### APPLICATION

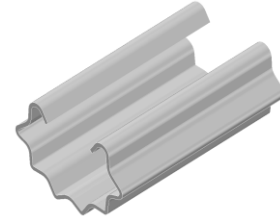
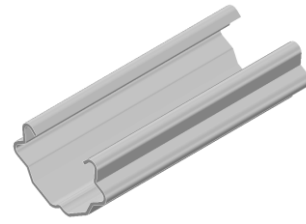
Stake for different agriculture cultures  
Z type holes in the webs with 100 mm spacing, 50 mm from the edge, for wire support



ESTACA A STAKE A



ESTACA B STAKE B



## CABECEIRA · HEADSTAKE

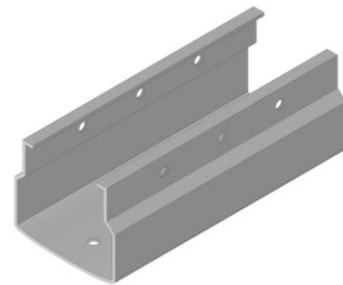
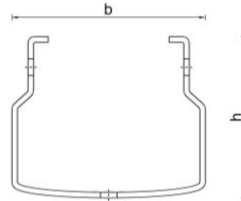
### APLICAÇÃO

Estaca de cabeceira para diferentes culturas agrícolas

Furos redondo 8 mm na alma com 100 mm de afastamento para fixação de arame

### APPLICATION

Headstake for different agriculture cultures  
Circular hole with 8 mm in the web with 100 mm spacing for wire support



Seção Section	h (mm)	b (mm)	t <sub>nom</sub> (mm)	P (kg/m)	Esquema de Furação Hole Scheme	L (m)	f (mm)	g (m)	n (un)	∅ (mm)	a (mm)				
ESTACA STAKE	34	52	1.2	1.04		Lateral Side	1.50	50	0.70	8	Z16.0	100			
			1.5	1.30			1.80		1.10						
			1.8	1.56			2.00		2.20						
CABECEIRA HEADSTAKE	50	42	2.0	2.08		Base Bottom	2.20	50	1.32	12	8.0	120			
						Lateral Side	2.40						100	1.32	12
							2.60								



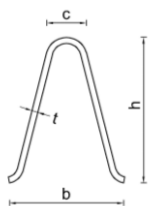
## PERFIL PORTÃO DE CORRER · SECTION FOR SLIDING GATE

### APLICAÇÃO

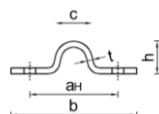
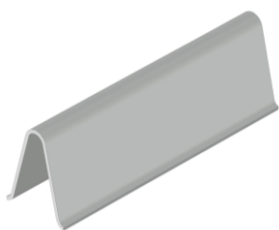
Perfil guia para portão de correr

### APPLICATION

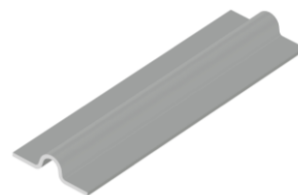
Rail section for sliding gate



GUIA DE CHUMBAR · CEMENT FIXING RAIL



GUIA DE APARAFUSAR · SURFACE FIXING RAIL



Seção Section	Roda Wheel	h (mm)	b (mm)	c (mm)	t <sub>nom</sub> (mm)	a <sub>H</sub> (mm)	Ø (mm)	P (kg/m)
GUIA DE CHUMBAR CEMENT FIXING RAIL	Ø16 mm	60	48	16	2.5	--	--	2.48
	Ø20mm	56	48	20	2.5	--	--	2.48
GUIA DE APARAFUSAR SURFACE FIXING RAIL	Ø16 mm	14	54	16	2.5	38	9.0 // 500	1.24



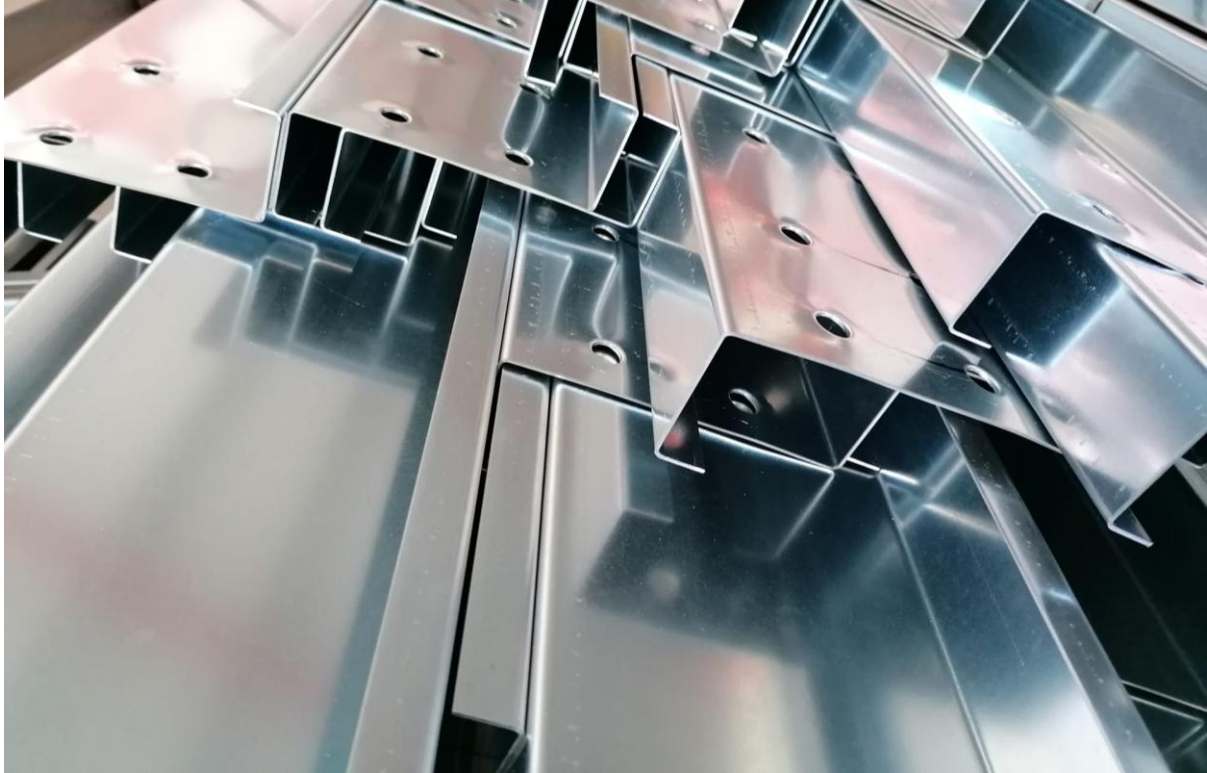
## QUINAGEM · PRESS-BRAKING

### APLICAÇÃO

Perfis personalizados em chapa de aço até 12 m de comprimento  
Comprimento e furação de acordo com os requisitos

### APPLICATION

Custom-made steel sections until 12 m of length  
Length and holes according to specifications



Rua Bartolomeu Dias, 8  
Parque Industrial Manuel da Mota  
3100-354 Pombal  
Portugal

(+351) 236 212 418

custo de chamada para a rede fixa nacional

call cost to national landline

geral@barraferros.com



[WWW.BARRAFERROS.COM](http://WWW.BARRAFERROS.COM)

